

## Top 7 Reasons to do CE with Tulsa Tech

1. **50 minutes** of class with **5 minute breaks** so you will be finished earlier
2. We **emphasize class discussion** about timely topics, so you can learn from one another and supplement the course
3. We use **humor** in our classes, so it's okay to laugh
4. CE Credits reported within **48 hours** of class
5. **Instructors are active producers** with 30+ years Experience
6. **No Continuing Education class cancellation** due to low enrollment
7. Class materials included so you have **references after class**

### Insurance Licensing Exam Prep

Sign Up [NOW](#) For Success

- Instructors are active producers with 30+ years of **real world experience**. They've, "Been there, done that" and laser-focus on the issues most likely to be on your test.
- Instructors provide their contact information. You can ask test exam **questions anytime** after class or before you take your exam.

Study manuals must be purchased from OK Insurance Department at [www.oid.ok.gov](http://www.oid.ok.gov) - \$40

**Exciting things are happening!**  
*Come check out our courses!*

**Unsure on what course  
you need to take?**

*To inquire on which course(s) you need for  
your upcoming license renewal, please call the  
Oklahoma Insurance Commission at (405) 521-3916.*

Training Center  
3638 S. Memorial Dr., Tulsa

918.828.5000  
Fax 918.828.5229

[tulsatech.edu](http://tulsatech.edu)

*Tulsa Tech does not discriminate on the basis of race, color, religion,  
national origin, gender, age, marital or veteran status, or disability.*

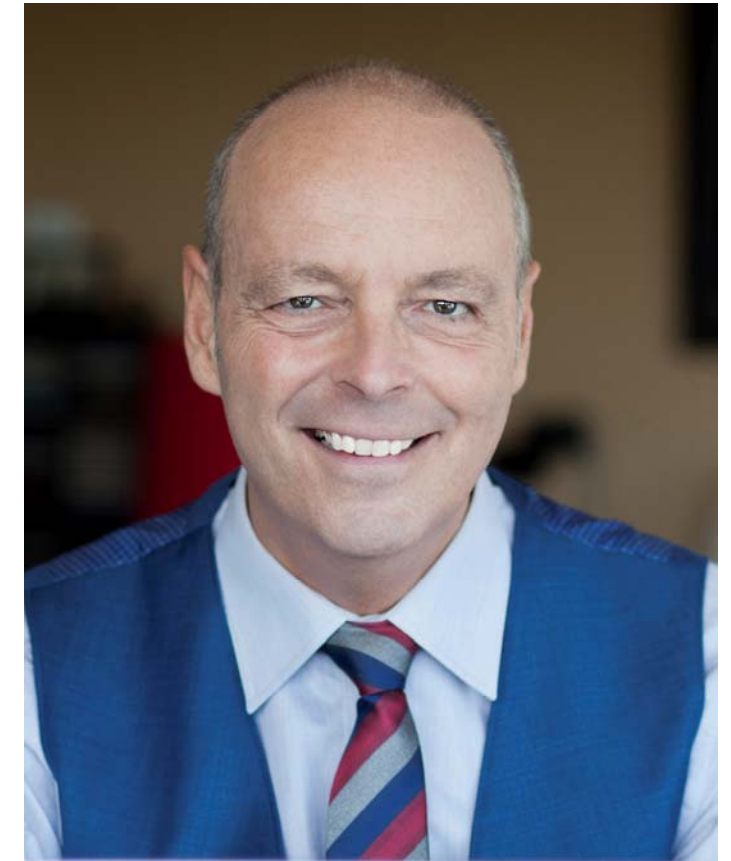
Non-Profit  
Organization  
U.S. Postage  
PAID  
Permit No.  
1307  
Tulsa, OK

**TulsaTech**  
**.edu**

Tulsa Technology Center, School District No. 18  
PO Box 477200  
Tulsa, OK 74147-7200

**TulsaTech**  
**.edu**

**INSURANCE PRODUCER, CSR,  
AND ADJUSTER  
LICENSING & CONTINUING  
EDUCATION**



**JANUARY - APRIL 2017**

*Adult Career Development*

